

Elinsa



Elementos Inyectados, S.A.

• Edition / CG 04

Compression fitting for plastic pipes. Ventilation, evacuation and extraction piping systems and fittings for smoke and fumes.

Injection moulding of advanced thermoplastics.

White Goods | Laboratory | Industry



General Catalogue

Fitting - Fluid handling - Ventilation - Fumes - Brico

Index

Pages
to: 04
23

Fitting Range

Introduction	04
Technical Innovation	08
Healthy Innovation	10
Hydraulic Applications	11
Certification, standards and tests	11
Components and installation	13
Encapsulated Fitting for Telecommunications	14
Geothermal Fitting	15
Mining Fitting	15
Adapters	16
Coupling	16
Caps	17
Tees	17
Elbows	19
Fitting Manifolds	20
Spare parts	22
Clamp Saddles	23

Pages
to: 26
28

BricoFitting Range

Introduction	26
EAN 13 BIDI/QR code	26
Fitting Brico	28

Pages
to: 34
54

Ventilation and Extraction Piping Systems

Introduction	34
Features and specifications	36
Range 0200	38
Range 0400	44
Range 0600	50
Installation	53
Regulations	53

General Terms and Conditions

54

INNOVAC
IONTECNI
CAPLASTI
COSFITTI
NGBRICCC
OVENTILA
CIONEXT
RACCION

Introduction



A Spanish manufacturer of thermoplastic elements and world leader in design.

With more than 40 years of experience, Elinsa has developed a unique and cutting edge range that has become a benchmark of the European market.

Quality, reliability and performance with a high commitment to the environment and human health.



Nut 20 mm Ref: 120TU000

F I T T I N G



Visit this section on
your mobile phone

Tee 20mm Ref: 120T1000

TECHNICAL INNOVATION



- PN 20: maximum operating pressure hydraulic.
- Range from 20 to 90 mm.
- Safe product for foodstuff and agricultural use.
- Product free of heavy metals (lead, mercury, cadmium, chromium VI and PBDEs).
- Universal Whitworth BSP thread in females and males.
- Suitable for trapezoidal metric nut, firm traction grip.
- **PasSyr** Design: body with no reduction of internal flow; avoids flow and load loss.
- **EasyFixSyr** System: innovative and automatic system for fixing and installing rigid and flexible pipes. Both professionals and individuals are able to **accomplish a perfect installation, errorless, since the set automatically grips, shapes, pulls, lodges and blocks the pipe.**
- **SmoothSyr** Design: a non-sticky coating on a no rough internal surface avoids the deposit of solid waste, incrustation and putrefaction inside the fitting.
- **Shock&proof** Design: threads built to protect from crushing by machinery or impact; assists the tool to engage body and nut.
- Security end stop when tightened.
- Anti-frost protection: thick wall to avoid freezing bursts.
- **RepaSyr** System: the internal stop is detachable allowing to transform the connections in repairing elements, allowing a better sliding through the damaged pipe.
- Control ring and perimeter pipe correction.
- Thermal insulation and resistant to abrasion and ultra-violet radiation.
- High chemical resistance (see table).
- Dielectric.
- High resistance to thermal ageing.
- Built to withstand the toughest conditions.
- Designed for 50 year of service life.

Standards UNE-EN 712, 713 and 715 with PE approved/imperial according to DIN, EN and ISO standards. Water at 20°C/72°F.

Universal Fitting for Polyethylene Pipelines

Our **EasyFixSyr** system is a revolutionary step forward in polyethylene (PE) pipelines fitting: you can insert any kind of PE pipe for any use, quality, form and resistance. It is the latest in versatility easing the task because you do not need to use any other metallic accessories or fusion tools which reduces costs significantly.

Other standard, reinforced and smooth, of polypropylene, polybutylene, PVC flex, EVA and latex hydraulic pipes are also compatible with this system (please check with our technical department the quality of the pipe and the use of liner).

Polyethylene PE*

- Food safe PE
- Agricultural PE
- HD and LD PE
- PE 100
- PE 80/63/40
- Sewage PE
- Telecommunications PE
- Electric PE (encapsulated)
- Single, dual, triple and multi PE pipes

Flexible PVC*

- Flexible PVC gray sanitary
- Flexible PVC blue pool
- Flexible PVC white non-toxic

Compatibles*

- PP flex/ext/smooth
- EVA
- Latex

* Standards approved, DIN, EN and ISO.



Universal Fitting for Metal Components and BSP Plastics

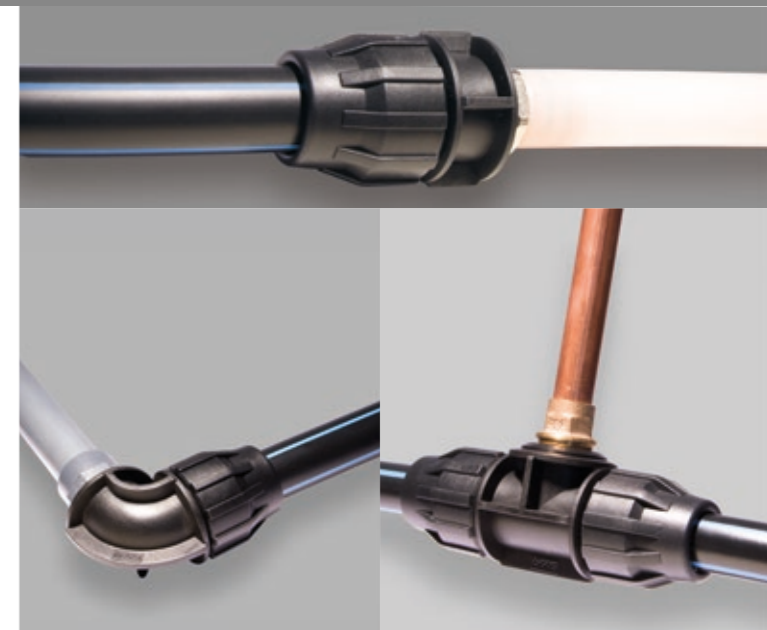
Both female and male fittings include a universal Whitworth BSP adaptor that will allow us to engage the fitting with any kind of components with the same adaptor.

Plastic Materials

- ABS
- PVC
- Polypropylene
- Polyethylene
- Nylon

Metal Materials

- Brass
- Copper
- Steel



Fitting

Compression fittings

HEALTHY INNOVATION

"Water and sanitation are two of the main engines of public health. As soon as potable water and appropriate sanitary installations are guaranteed we will have won a great battle against all kind of diseases"

WHO (World Health Organization)

Elinsa takes a preventive approach using advanced thermoplastic materials instead of chemicals that present risks to the human health and to the environment.



Regulations

Our product has passed the tests established by:

- Directive of the European Union Regulation 10/2011
- RD 140/2003 (Royal Spanish Decree)

Drinking Water

- Approved for repetitive contact with water intended for human consumption (food product).
- Does not modify drinking quality, smell, colour or taste of water.

Foodstuff

- Approved for repetitive contact with watery foodstuff and non-alcoholic food (grad 20%) for human consumption.

Agricultural food for human consumption

- Approved for repetitive contact with products intended for human consumption like vegetables, fruits and legumes.

Directive PIM of the European Union 10/2011
Mandatory rules for EU countries relating to plastic materials and articles intended of food contact substances since 2011.
Regulation (EU) 10/2011 Test UNE-EN 1186-3 and 1186-1



Elinsa believes public health is a priority issue, so we go further beyond meeting the directives of the EU, fulfilling the parameters of the RoHS (Restriction of Hazardous Substances) directive. Thus, we certificate that all the materials we manufacture to be in contact with water are free of heavy metals, so harmful for human health and for the environment.



(This information represents Elinsa's knowledge and belief, based on information and requirement to suppliers and on quality assurance).

HYDRAULIC APPLICATIONS: FOOD AND GENERIC

Food applications*

- Water distribution facilities for human use and consumption
- Treated waste-water networks
- Hydro-sanitary and food networks
- Geothermal and solar thermal networks
- Recreational and hygiene areas networks (swimming pools, fountains, showers, etc.)
- Irrigation networks with drinking water supply
- Inner and outer water networks for buildings (home, swimming pools, garden, etc.)

Generic applications

- Treated waste-water networks
- Agricultural irrigation (cereals and fruit)
- Industrial distribution networks
- Fire fighting networks
- Mining

*Public and private installation requirements for water intended for human consumption; approved food product: RD/CTE, quality of the water regulator (Quality standards); water networks for human use and consumption management and public administrations (depending on the country). Food ownership: sanitation rules and techniques; drinking water tests, approved free of heavy metals products, use of materials and tests with food elements.

CERTIFICATE, STANDARDS AND TESTS

All our production processes are under exhaustive quality control tests to guarantee our fitting is beyond suggested specifications by standards and tests.



Technological Functional Standards

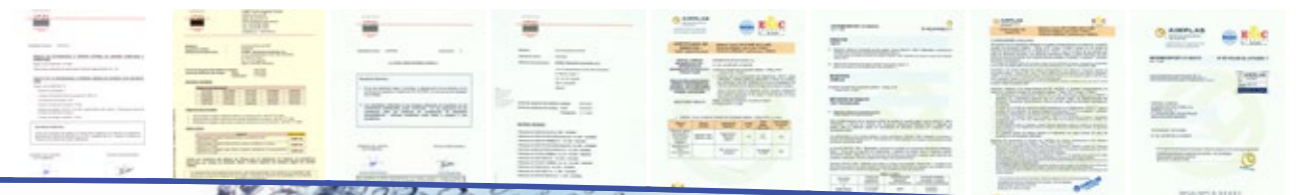
- UNE-EN 712 test method for resistance to pull-out under constant longitudinal force
- UNE-EN 713 test method for leaktightness under internal pressure of assemblies subjected to bending
- UNE-EN 715 test method for leaktightness under internal water pressure, including end thrust.
- Buried or surface installations

Technical Standards

- CTE (Código Técnico de Edificación) Technical Building Code
- RD 140/2003, Royal Spanish Decree which establishes the health criteria on the quality of water for human consumption.

Health Tests and Certifications

- Approved for foodstuff and for human consumption
- Directive of the European Union Regulation 10/2011
 - UNE-EN 1186-3
 - UNE-EN 1186-1
- Certificate of materials free of heavy metals
- Certificate of o-ring seal



You can learn more about compression fittings launching this video on your mobile phone.



Features and Functionalities:

1 Body:

- Features: patented design to withstand high pressures; external threads to assist tools; EasyFixSyr[®] system inside: internal clips to avoid errors while assembling; PasSyr[®] system: internal flow measure to avoid flow loss; SmoothSyr[®] system: internal rough-less treatment to avoid waste deposit and pressure drop.
- Function: to enclose the other elements and to withstand internal pressure.

2 Sealing gasket for food (O-Ring seal):

- Features: suitable for use with foodstuffs, extra-thick and high chemical resistance (please check product resistance).
- Function: to seal the installation hermetically.

3 Washer:

- Features: rigid flat ring.
- Function: to calibrate the pipe and to compress the o-ring seal.

4 Insert:

- Features: serrated edge.
- Function: to capture, shape, drag and place the pipe.

5 Nut:

- Features: trapezoidal metric, thicker threads on the surface to help tighten and to strengthen against twist.
- Function: to shape and adjust the other elements of the hermetic system.



COMPONENTS AND INSTALLATION



EasyFixSyr[®] Installation

1. Place the nut, the insert, the compression washer and the o-ring seal in the pipe.
2. Place the pipe in the fitting until you feel a smooth adjustment (EasyFixSyr[®] system).
3. Bring the elements forward to the body.
4. Tighten the nut by hand and then firmly with a wrench. The EasyFixSyr[®] system finishes the installation: gripping, pulling, lodging and blocking the pipe with every turn. Perfect installation warranty for 50 years.



Elinsa does not recommend a quick coupling with flexible and rigid pipes. If the pipe is not perfectly bevelled and measured it can damage the o-ring seal, not guaranteeing watertightness.

Note: in 75 mm, 90 mm, PE100 and high pressure installations, we recommend a 10 atm pressure test and a second tighten. By doing this we can fix any possible dilatation of the pipe and we prepare the pipe to work at its final pressure.

ENCAPSULATED FITTING FOR TELECOMMUNICATIONS

Fitting accessories and conduits for telecommunications intended to protect any kind of communication cable, encapsulated fiber optic cable, coaxial cable, power cords and CATV.



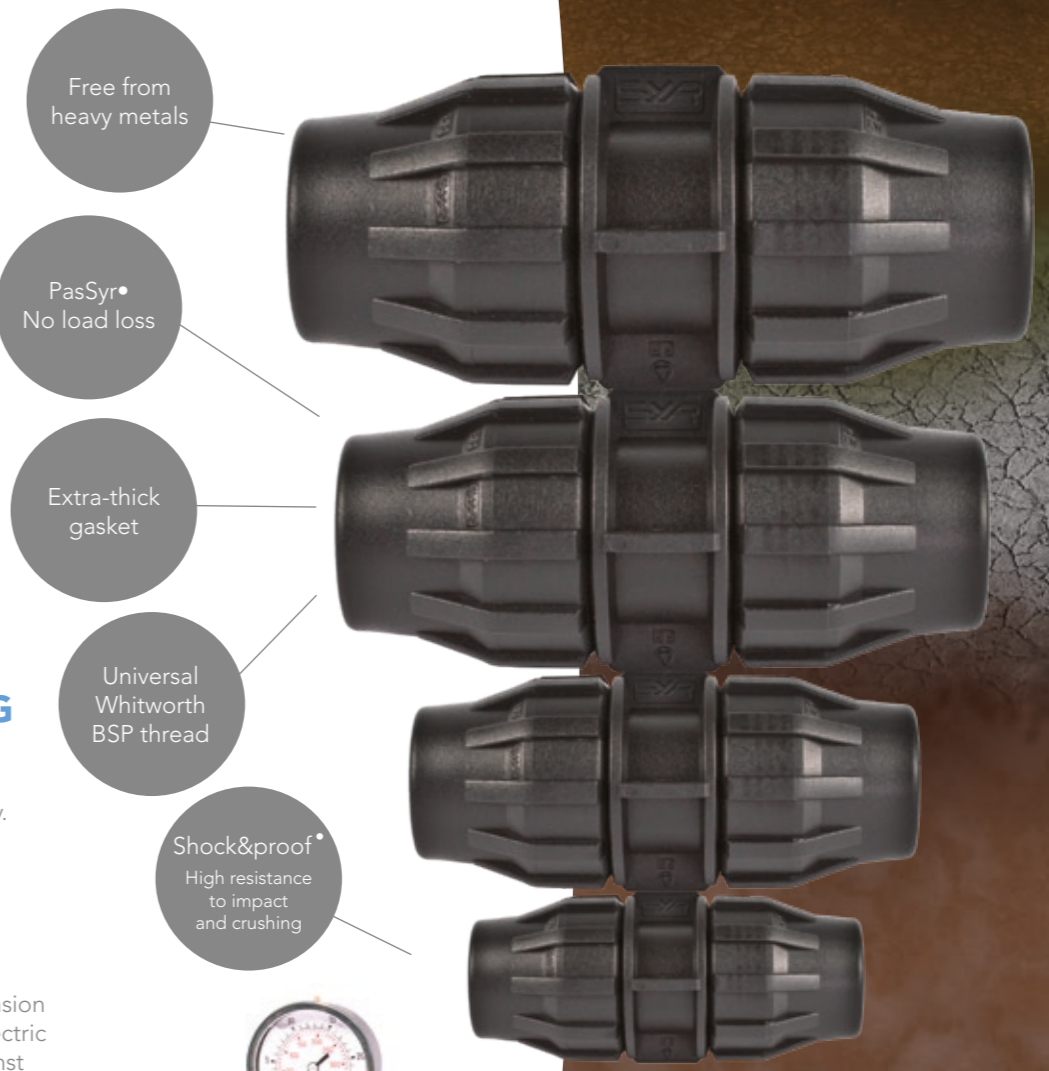
Designed for a service life of 50 years
Standards UNE-EN 712, 713 and 715
Directive RoHS
Colour code identification (on request); standard black
Used by leading telecommunication companies

GEOHERMAL FITTING

Fitting for channelling in geothermic energy installations with open or closed loop/circuit: horizontal and vertical.

Features

- Suitable for use with foodstuff
- Abrasion resistance
- No oxidation
- Low frictional resistance
- Maximum resistance to pull out
- Standards UNE-EN 712, 713 and 715
- Directive RoHS



MINING FITTING

Fitting to join polyethylene pipes in the mining industry.

Features

- High resistance to abrasion
- No oxidation and dielectric
- Pressure resistant against overpressure
- High resistance to impact and crushing
- Internal flow measure PasSyr
- No breaking points of blockage and incrustation
- Built to withstand the toughest conditions

Fitting Range



Adapters

MALE THREADED ADAPTOR



Size (Ø mm - Inches)	Reference	Units/ box
20 - 1/2"	120EM000	50
20 - 3/4"	120EM250	50
25 - 1/2"	125EM200	50
25 - 3/4"	125EM000	50
32 - 1"	132EM000	25
40 - 1 1/4"	140EM000	25
50 - 1 1/2"	150EM000	15
63 - 2"	163EM000	15
75 - 2 1/2"	175EM000	5
90 - 3"	190EM000	5

FEMALE THREADED ADAPTOR



Size (Ø mm - Inches)	Reference	Units/ box
20 - 1/2"	120EH000	50
25 - 1/2"	125EH200	50
25 - 3/4"	125EH000	50
32 - 1"	132EH000	25
40 - 1 1/4"	140EH000	25
50 - 1 1/2"	150EH000	15
63 - 2"	163EH000	15
75 - 2 1/2"	175EH000	5
90 - 3"	190EH000	5

Cap

END CAP



Size (Ø mm)	Reference	Units/ box
20	120TF000	50
25	125TF000	50
32	132TF000	25
40	140TF000	25
50	150TF000	15
63	163TF000	15
75	175TF000	5
90	190TF000	5

Coupling

JOINT COUPLING



Size (Ø mm)	Reference	Units/ box
20 - 20	120MU000	50
25 - 25	125MU000	50
32 - 32	132MU000	25
40 - 40	140MU000	25
50 - 50	150MU000	15
63 - 63	163MU000	15
75 - 75	175MU000	5
90 - 90	190MU000	5

REDUCING COUPLING



Size (Ø mm)	Reference	Units/ box
25 - 20	125MR000	50
32 - 25	132MR000	25
40 - 32	140MR000	25
50 - 40	150MR000	15
63 - 50	163MR000	15
75 - 63	175MR000	5
90 - 75	190MR000	5

Tees

MALE TEE



Size (Ø mm - Inches)	Reference	Units/ box
20 - 1/2" - 20	120TM000	50
25 - 1/2" - 25	125TM200	50
25 - 3/4" - 25	125TM000	50
32 - 1" - 32	132TM000	25
40 - 1 1/4" - 40	140TM000	25
50 - 1 1/2" - 50	150TM000	15

FEMALE TEE



Size (Ø mm - Inches)	Reference	Units/ box
20 - 1/2" - 20	120TH000	50
25 - 1/2" - 25	125TH200	50
25 - 3/4" - 25	125TH000	50
32 - 3/4" - 32	132TH250	25
32 - 1" - 32	132TH000	25
40 - 1" - 40	140TH320	25
40 - 1 1/4" - 40	140TH000	25
50 - 1" - 50	150TH320	15
50 - 1 1/4" - 50	150TH400	15
50 - 1 1/2" - 50	150TH000	15
63 - 2" - 63	163TH000	15
75 - 2 1/2" - 75	175TH000	5

Fitting Range



Tees

EQUAL TEE



Size (Ø mm)	Reference	Units/box
20 - 20 - 20	120TI000	50
25 - 25 - 25	125TI000	50
32 - 32 - 32	132TI000	25
40 - 40 - 40	140TI000	25
50 - 50 - 50	150TI000	15
63 - 63 - 63	163TI000	10
75 - 75 - 75	175TI000	5

REDUCING TEE



Size (Ø mm)	Reference	Units/box
25 - 20 - 25	125TR000	50
32 - 25 - 32	132TR000	25
40 - 32 - 40	140TR000	25
50 - 40 - 50	150TR000	15
63 - 50 - 63	163TR000	10
75 - 63 - 75	175TR000	5

REDUCING TEE - BOTH ENDS



Size (Ø mm)	Reference	Units/box
25 - 20 - 20	125TD000	50
32 - 25 - 25	132TD000	25
40 - 32 - 32	140TD000	25
50 - 40 - 40	150TD000	15
63 - 50 - 50	163TD000	10
75 - 63 - 63	175TD000	5

TWO FEMALE TEE



TE + threaded join:
for drip irrigation rings.

Size (Ø mm - Inches)	Reference	Units/box
1/2" - 20 - 1/2"	120HH200	50
1/2" - 25 - 1/2"	125HH200	50
1/2" - 25 - 3/4"	125HH251	50
3/4" - 25 - 3/4"	125HH250	50
1" - 32 - 1"	132HH320	25
1 1/4" - 40 - 1 1/4"	140HH400	25
1 1/2" - 50 - 1 1/2"	150HH500	15

Elbows

90° ELBOW MALE THREAD



Size (Ø mm - Inches)	Reference	Units/box
20 - 1/2"	120CM000	50
25 - 3/4"	125CM000	50
32 - 1"	132CM000	25
40 - 1 1/4"	140CM000	25
50 - 1 1/2"	150CM000	15
63 - 2"	163CM000	15
75 - 2 1/2"	175CM000	5

90° ELBOW FEMALE THREAD



Size (Ø mm - Inches)	Reference	Units/box
20 - 1/2"	120CH000	50
25 - 3/4"	125CH000	50
32 - 1"	132CH000	25
40 - 1 1/4"	140CH000	25
50 - 1 1/2"	150CH000	15
63 - 2"	163CH000	15
75 - 2 1/2"	175CH000	5

90° ELBOW



Size (Ø mm)	Reference	Units/box
20 - 20	120CD000	50
25 - 25	125CD000	50
32 - 32	132CD000	25
40 - 40	140CD000	25
50 - 50	150CD000	15
63 - 63	163CD000	15
75 - 75	175CD000	5

90° ELBOW TWO MALE THREADS



Size (Inches)	Reference	Units/box
1/2" - 1/2"	120CMM00	50
3/4" - 3/4"	125CMM00	50
1" - 1"	132CMM00	25
1 1/2" - 1 1/2"	150CMM00	15
2" - 2"	163CMM00	15
2 1/2" - 2 1/2"	175CMM00	5

Fitting Range



Elbows

90° ELBOW MALE - FEMALE THREADS



Size (Inches)	Reference	Units/box
1" - 1"	132CMH00	25

WALL SUPPORT 90° ELBOW



Size (Ø mm - Inches)	Reference	Units/box
20 - 1/2"	120CG000	50
25 - 3/4"	125CG000	50
32 - 1"	132CG000	25

Fitting Manifolds

MALE - MALE TEE



Size (Ø mm - Inches)	Reference	Units/box
32 - 1" - 1"	132TMM00	25
50 - 1 1/2" - 1 1/2"	150TMM00	15

MALE - LONG MALE TEE



Size (Ø mm - Inches)	Reference	Units/box
32 - 1" - 1"	132TMMLO	25

Fitting Manifolds

MALE - MALE - FEMALE TEE



Size (Ø mm - Inches)	Reference	Units/box
1" - 1" - 1"	132TMMH0	25
1 1/2" - 1 1/2" - 1 1/2"	150TMMH0	15

MALE - LONG MALE - FEMALE TEE



Size (Inches)	Reference	Units/box
1" - 1" - 1"	132TMMHLH	25

MALE - FEMALE TEE



Size (Ø mm - Inches)	Reference	Units/box
32 - 1" - 1"	132TMH00	25
50 - 1 1/2" - 1 1/2"	150TMH00	15

Unique patented system: you can join the parts with the BSP thread without pipes, creating countless combinations of manifolds.



Fitting Range



Spare Parts

CLIP RING



Size (Ø mm)	Reference	Units/box
20	120CI000	1
25	125CI000	1
32	132CI000	1
40	140CI000	1
50	150CI000	1
63	163CI000	1
75	175CI000	1
90	190CI000	1

O-RING



Size (Ø mm)	Reference	Units/box
20	120JT000	1
25	125JT000	1
32	132JT000	1
40	140JT000	1
50	150JT000	1
63	163JT000	1
75	175JT000	1
90	190JT000	1

WASHER



Size (Ø mm)	Reference	Units/box
20	120AR000	1
25	125AR000	1
32	132AR000	1
40	140AR000	1
50	150AR000	1
63	163AR000	1
75	175AR000	1
90	190AR000	1

NUT



Size (Ø mm)	Reference	Units/box
20	120TU000	1
25	125TU000	1
32	132TU000	1
40	140TU000	1
50	150TU000	1
63	163TU000	1
75	175TU000	1
90	190TU000	1

Clamp Saddles

REGULAR CLAMP SADDLES



Outlet (Inches)	Pipe size (Ø mm)	Regular Reference
1/2"	20	020CS200
1/2"	25	025CS200
1/2"	32	032CS200
1/2"	40	040CS200
1/2"	50	050CS200
1/2"	75	075CS200
1/2"	90	090CS200
3/4"	25	025CS250
3/4"	32	032CS250
3/4"	40	040CS250
3/4"	50	050CS250
3/4"	63	063CS250
3/4"	75	075CS250
3/4"	90	090CS250
1"	32	032CS320
1"	40	040CS320
1"	50	050CS320
1"	63	063CS320
1"	75	075CS320
1"	90	090CS320
1"	110	110CS320
1 1/4"	90	090CS400
1 1/2"	63	063CS500
1 1/2"	75	075CS500
1 1/2"	90	090CS500
1 1/2"	110	110CS500

Suitable in PE, PP, PVC-U normalized pipes.

REINFORCED CLAMP SADDLES



Outlet (Inches)	Pipe size (Ø mm)	Reinforced Reference
1/2"	25	025CR200
1/2"	32	032CR200
1/2"	40	040CR200
1/2"	50	050CR200
1/2"	75	075CR200
1/2"	90	090CR200
1/2"	110	110CR200
3/4"	25	025CR250
3/4"	32	032CR250
3/4"	40	040CR250
3/4"	50	050CR250
3/4"	63	063CR250
3/4"	75	075CR250
3/4"	90	090CR250
3/4"	110	110CR250
1"	32	032CR320
1"	40	040CR320
1"	50	050CR320
1"	63	063CR320
1"	75	075CR320
1"	90	090CR320
1"	110	110CR320
1"	125	125CR320
1 1/4"	90	090CR400
1 1/2"	63	063CR500
1 1/2"	75	075CR500
1 1/2"	90	090CR500
1 1/2"	110	110CR500

Suitable in PE, PP, PVC-U normalized pipes.

B R I C O F I T T I N G



Visit this section on
your mobile phone

Two reductions Tee 25-20-20mm Ref: E125TD000

Brico Fitting

INTRODUCTION TO EAN 13 and BIDI QR Code

We adjust our products to ease distribution with a unit EAN 13 bar code holder patented by Elinsa, allowing stock control and payment at checkout. The customer can access to a complete information of the product (features, explanatory video, assembly recommendations, installation requirements, etc.) using the QR BIDI code printed in the holder.

With this new features we ease purchase, stocks and storage space, having a unique range for plumbing and garden.



EAN 13 bar code

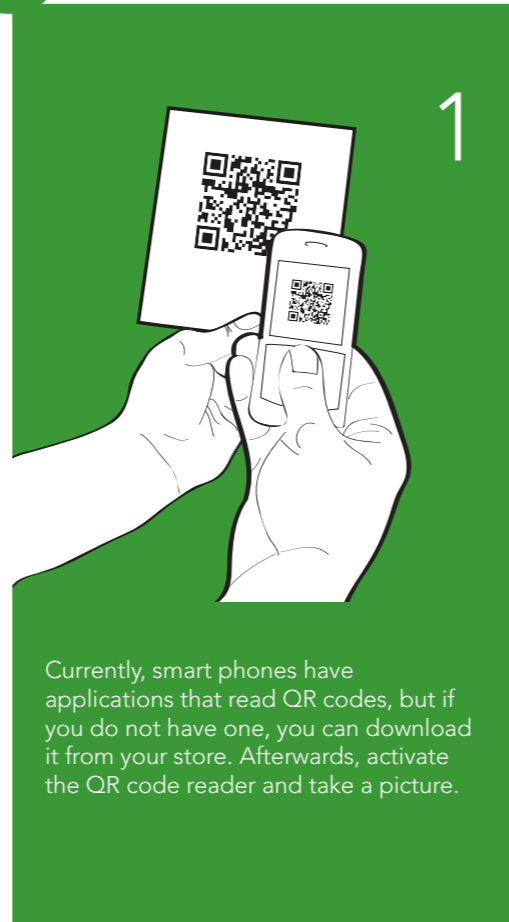
QR BIDI Code



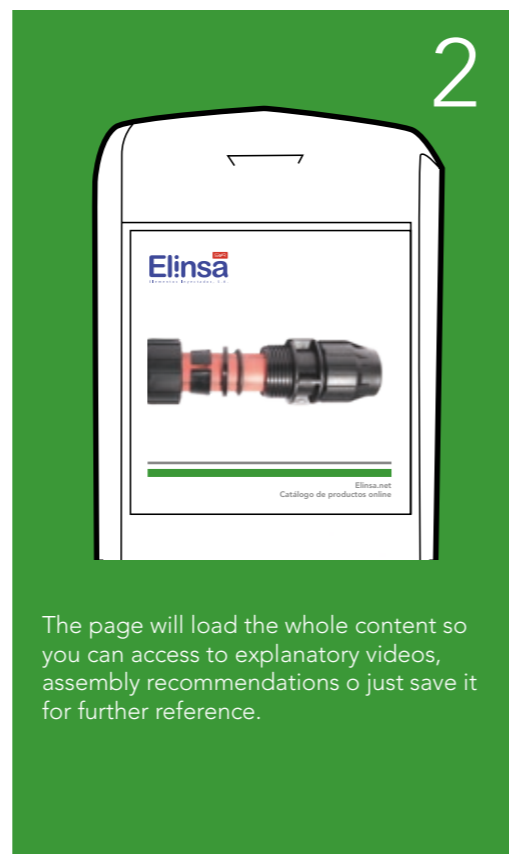
Identifier: - gray 20 mm
- green 25 mm
- black 32 mm
- yellow 40 mm
- orange 50 mm

Colour code by measures

- **Foodstuff and agricultural:** free from heavy metals.
- **EasyFixSyr®:** easy and quick assembly by professionals and particulars.
- **Plug & play:** assembly and ready to use.
- **SmoothSyr®:** no waste/no putrefaction.
- **Shock&proof®:** anti-freeze.
- **Extra thick o-ring seal.**
- **Colour code:** eases identification on storage and installation.
- **Suitable for rigid and flexible pipes:** polyethylene, PVC flex, polypropylene, EVA, rubber, latex (see page 9).
- **Adaptable to fittings:** brass, copper, aluminium, ABS, PVC, PP, PE and nylon.



Currently, smart phones have applications that read QR codes, but if you do not have one, you can download it from your store. Afterwards, activate the QR code reader and take a picture.



The page will load the whole content so you can access to explanatory videos, assembly recommendations or just save it for further reference.



Bar code holders and clips are protected by international patents.



HYDRAULIC APPLICATIONS: FOOD AND GENERICS

Public and private networks and water connections, inner and outer networks in buildings: gardens, recreational and hygiene areas (swimming pools, showers, fountains, domestic gardens, etc.)

All kind of networks, water supply and sanitation appropriate for human use and consumption.

The importance of choosing a food product

The lack of regulations in the market and the widespread lack of knowledge of the end user lead to buy inappropriate products and non food products to use in installations for human use and consumption, risking human and environmental health. It is extremely important that manufacturers and dealers become aware and advise the end user of such risks.

Public and private installation requirements for water intended for human consumption; approved food product: RD/CTE, quality of the water regulator (Quality standards); water networks for human use and consumption management and public administrations (depending on the country). Food ownership: sanitation rules and techniques; drinking water tests, certifications for products free of heavy metals, use of materials and tests with food elements.

Brico Fitting Range



Brico Fitting

MALE THREADED ADAPTOR



Size (Ø mm - Inches)	Reference	Units/box	EAN 13 bar code
20 - 1/2"	E120EM000	25	8436041360544
25 - 3/4"	E125EM000	25	8436041360575
32 - 1"	E132EM000	15	8436041360582
40 - 1 1/4"	E140EM000	15	8436041360599
50 - 1 1/2"	E150EM000	15	8436041360605

FEMALE THREADED ADAPTOR



Size (Ø mm - Inches)	Reference	Units/box	EAN 13 bar code
20 - 1/2"	E120EH000	25	8436041360643
25 - 3/4"	E125EH000	25	8436041360667
32 - 1"	E132EH000	15	8436041360674
40 - 1 1/4"	E140EH000	15	8436041360681
50 - 1 1/2"	E150EH000	15	8436041360698

JOINT COUPLING



Size (Ø mm)	Reference	Units/box	EAN 13 bar code
20 - 20	E120MU000	25	8436041360735
25 - 25	E125MU000	25	8436041360742
32 - 32	E132MU000	15	8436041360759
40 - 40	E140MU000	15	8436041360766
50 - 50	E150MU000	15	8436041360773

REDUCING COUPLING



Size (Ø mm)	Reference	Units/box	EAN 13 bar code
25 - 20	E125MR000	25	8436041360803
32 - 25	E132MR000	15	8436041360810
40 - 32	E140MR000	15	8436041360827
50 - 40	E150MR000	15	8436041360834

Brico Fitting

END CAP



Size (Ø mm)	Reference	Units/box	EAN 13 bar code
20	E120TF000	25	8436041361664
25	E125TF000	25	8436041361671
32	E132TF000	15	8436041361688
40	E140TF000	15	8436041361695
50	E150TF000	15	8436041361701

MALE TEE



Size (Ø mm - Inches)	Reference	Units/box	EAN 13 bar code
20 - 1/2" - 20	E120TM000	25	8436041361008
25 - 3/4" - 25	E125TM000	25	8436041361022
32 - 1" - 32	E132TM000	15	8436041361039
40 - 1 1/4" - 40	E140TM000	15	8436041361046
50 - 1 1/2" - 50	E150TM000	15	8436041361053

FEMALE TEE



Size (Ø mm - Inches)	Reference	Units/box	EAN 13 bar code
20 - 1/2" - 20	E120TH000	25	8436041360872
25 - 3/4" - 25	E125TH000	25	8436041360896
32 - 1" - 32	E132TH000	15	8436041360919
40 - 1 1/4" - 40	E140TH000	15	8436041360933
50 - 1 1/2" - 50	E150TH000	15	8436041360964

TEE



Size (Ø mm)	Reference	Units/box	EAN 13 bar code
20 - 20 - 20	E120TI000	25	8436041361060
25 - 25 - 25	E125TI000	25	8436041361077
32 - 32 - 32	E132TI000	15	8436041361084
40 - 40 - 40	E140TI000	15	8436041361091
50 - 50 - 50	E150TI000	15	8436041361107

Other figures and measures 63mm, 75mm and 90mm on request.

Other figures and measures 63mm, 75mm and 90mm on request.

Brico Fitting Range



Brico Fitting

REDUCING TEE



Size (Ø mm)	Reference	Units/box	EAN 13 bar code
25 - 20 - 25	E125TR000	25	8436041361145
32 - 25 - 32	E132TR000	15	8436041361152
40 - 32 - 40	E140TR000	15	8436041361169
50 - 40 - 50	E150TR000	15	8436041361176

REDUCING TEE - BOTH ENDS



Size (Ø mm)	Reference	Units/box	EAN 13 bar code
25 - 20 - 20	E125TD000	25	8436041361213
32 - 25 - 25	E132TD000	15	8436041361220
40 - 32 - 32	E140TD000	15	8436041361237
50 - 40 - 40	E150TD000	15	8436041361244

90° ELBOW MALE THREAD



Size (Ø mm - Inches)	Reference	Units/box	EAN 13 bar code
20 - 1/2"	E120CM000	25	8436041361411
25 - 3/4"	E125CM000	25	8436041361428
32 - 1"	E132CM000	15	8436041361435
40 - 1 1/4"	E140CM000	15	8436041361442
50 - 1 1/2"	E150CM000	15	8436041361459

90° ELBOW FEMALE THREAD



Size (Ø mm - Inches)	Reference	Units/box	EAN 13 bar code
20 - 1/2"	E120CH000	25	8436041361343
25 - 3/4"	E125CH000	25	8436041361350
32 - 1"	E132CH000	15	8436041361367
40 - 1 1/4"	E140CH000	15	8436041361374
50 - 1 1/2"	E150CH000	15	8436041361381



Brico Fitting

90° ELBOW



Size (Ø mm)	Reference	Units/box	EAN 13 bar code
20 - 20	E120CD000	25	8436041361541
25 - 25	E125CD000	25	8436041361558
32 - 32	E132CD000	15	8436041361565
40 - 40	E140CD000	15	8436041361572
50 - 50	E150CD000	15	8436041361589

WALL SUPPORT 90° ELBOW



Size (Ø mm - Inches)	Reference	Units/box	EAN 13 bar code
20 - 1/2"	E120CG000	25	8436041361633
25 - 3/4"	E125CG000	25	8436041361640
32 - 1"	E132CG000	15	8436041361657

Other figures and measures 63mm, 75mm and 90mm on request.

90° ELBOW WITH LATERAL SCREW



Size (Ø mm)	Reference	Units per box	EAN 13 bar code
25 - 1/2" - 25	E125CL000	50	8436041364641
32 - 3/4" - 32	E132CL000	25	8436041364658

90° elbow with lateral screw

Other figures and measures 63mm, 75mm and 90mm on request.

VENTILATION | EXTRACTION



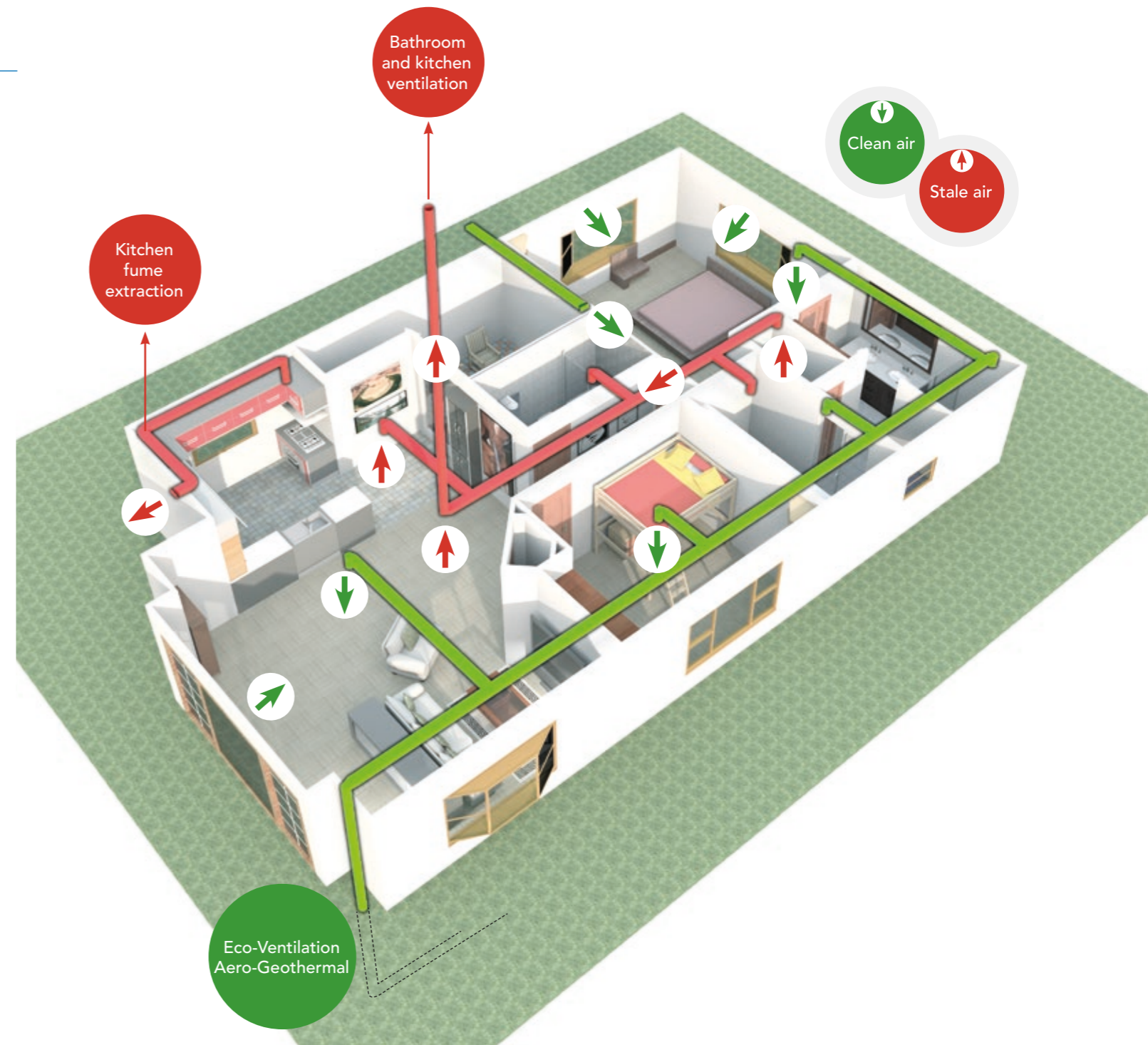
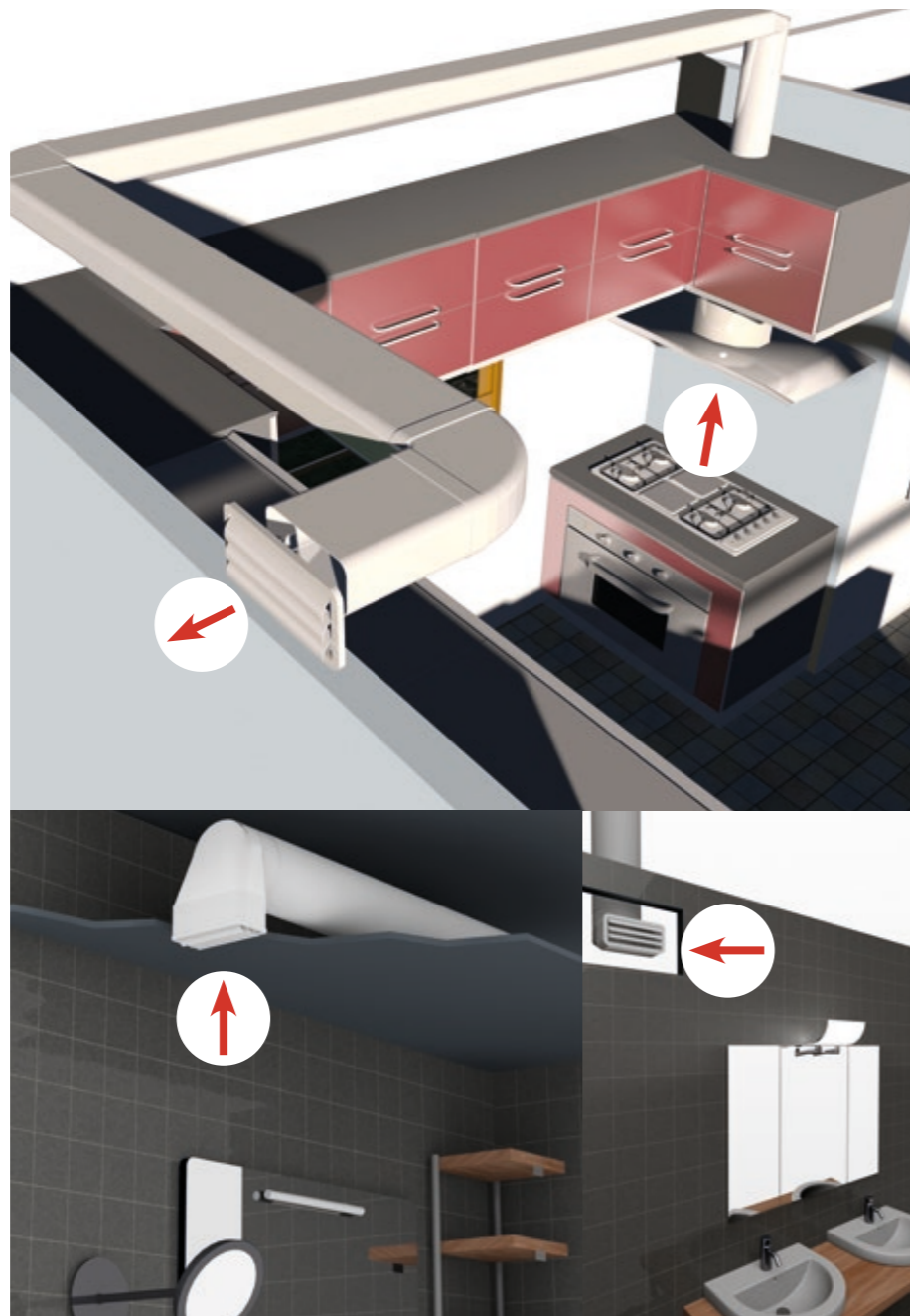
Visit this section on
your mobile phone

Rectangular wall outlet Ref: 0251

Plastic Piping and Accessories for Ventilation and Extraction

Distribution, self-service and traceability:

We adjust our products to ease distribution with a unit EAN 13 bar code allowing stock control and payment at checkout.

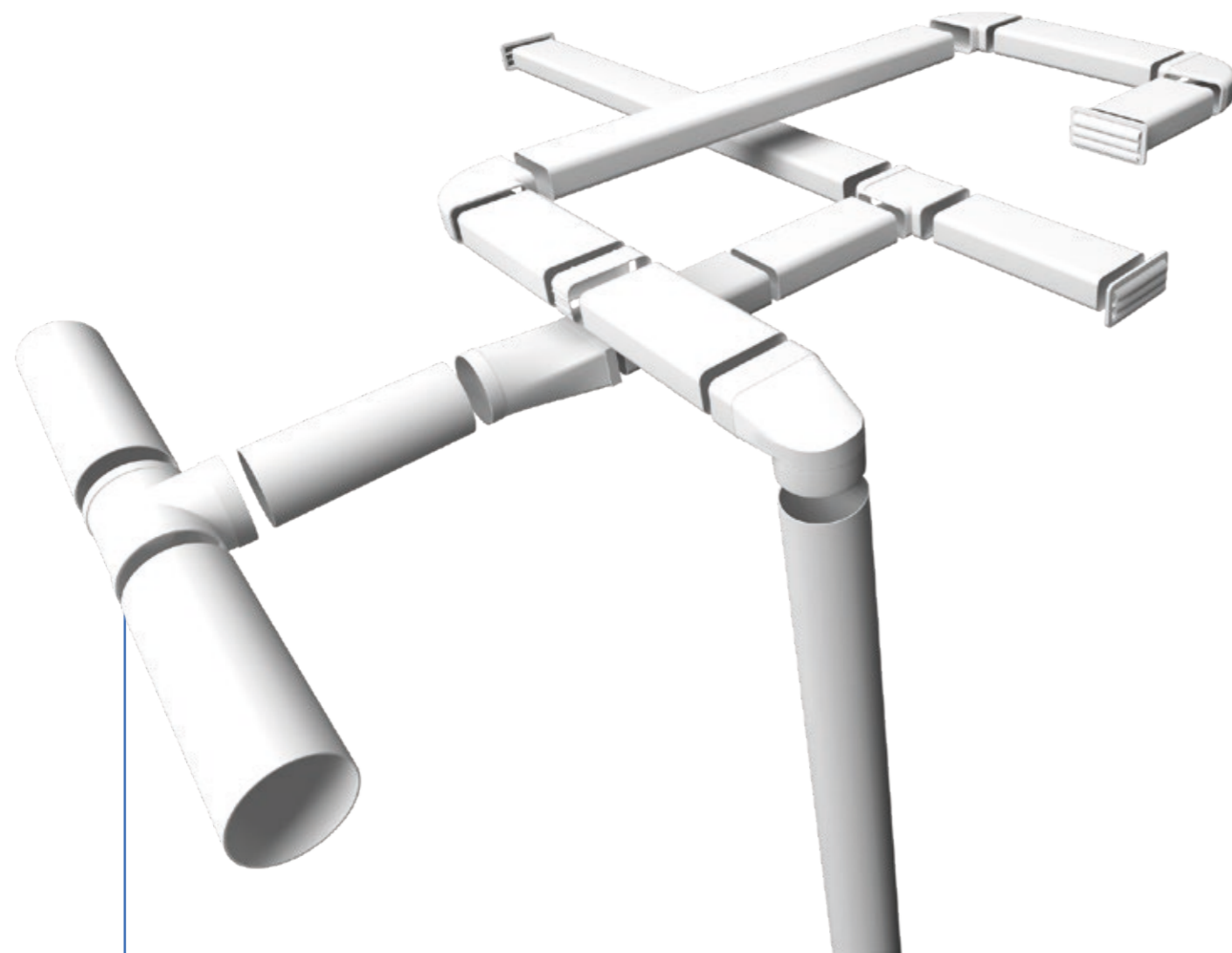


PRODUCT TESTED AND RECOMMENDED BY LEADING MANUFACTURERS

MAXIMUM PERFORMANCE – MINIMUM SONORITY



Features new thermoplastic pipes CompositeSYR[®]



- **Fireproof and self extinguishing pipe** • **Restriction of Hazardous Substances. Free from heavy metals** (lead, mercury, cadmium, chromium VI and PBDEs) within the parameters established by the RoHS Directive • **Antibacterial**, intrinsic resistance to bacteria allowing evacuation and healthiness through motorized active systems with a proper maintenance
- **Anti fungal**, intrinsic resistance to fungi propagation • **Corrosion proof**, immune to the effects of corrosion • **Non sticking surface to solid particles** allowing evacuation through motorized active systems **avoiding wastes** • **100% anti decomposition**: rusting and putrefaction do not affect thermoplastic • **Sanitary**: approved for public use • **Acoustic dimmer**: aerodynamic features to handle **large flow of air**, creating **high noise reduction** and low charge loss, simultaneously, compared to other pipes • Designed for **minimum charge loss** • **UV high resistance** • **Accessory features**: high impact PS, anti shock, white color • **Full bore** of previous joints • **100% environmentally sound and recyclable**
- Maximum working temperature 70°C • Sealed system: **high waterproofing** • **Athermic** • **Dielectric** • High abrasion resistance • Designed for **50 years of useful life**.

Use:

Extraction, extractor hoods, ventilation, aero thermal application.

Normatives:

Extraction CTE DB HE3 | UNE-EN 61591:1997
Ventilation CTE DB HS3 | CTE DB HE | RITE 2007 | Energy efficiency RD 564/2017
Aero thermal CTE DB HE4

Recommended by: Teka, Balay, Franke, LYNX, Thor, Bosch, Cata, Mepamsa, AEG, Electrolux, Zanussi, Miele, Nodor, Apelson and Siemens.

High waterproofing

Antibacterial

Free from heavy metals

Corrosion proof

Anti fungal

100% anti decomposition

Fire proof and self extinguish

Hygienic and non sticking surface to solid particles

Athermic and dielectric

Acoustic dimmer

FLOW CHART

Pipe	Format	Measures	Section	Flow		
				Extraction equivalent	Extraction	Ventilation / Aero thermal
Range 0200		100 mm	7850	100 mm	≤ 400 m³/h	✓
		55 x 110 mm	6050			
Range 0400		120 mm	11308	120 -125 mm	400 a 600 m³/h	✓
		70 x 147 mm	10290			
Range 0600		150 mm	17662	150 mm	≥ 600 m³/h	✓
		90 x 170 mm	15320			

Plastic Piping and Accessories for Ventilation and Extraction

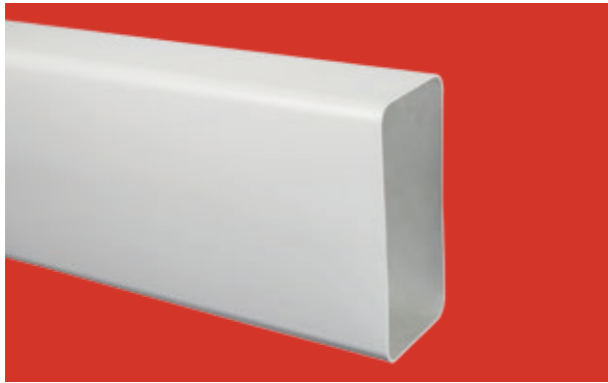


Range 0200

Ref: 0200 - FLAT CHANNEL

□ 110 x 55 x 1.500 mm

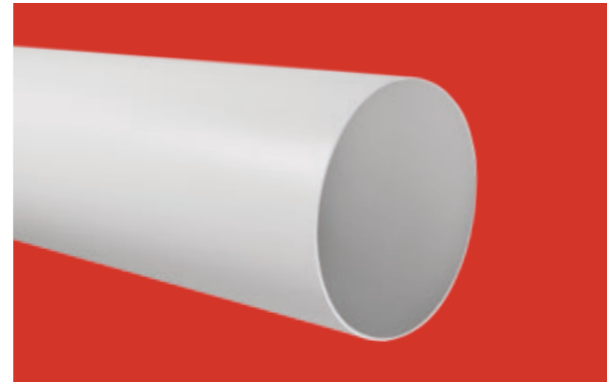
Units per box: 24 m. (16 pieces of 1,5 m)



Ref: 0201 - ROUND PIPE

Ø 100 x 1.500 mm

Units per box: 18 m. (12 pieces of 1,5 m)



Ref: 0202 - STRAIGHT ROUND PIPE CONNECTOR

Ø 100 mm

Units per box: 50



EAN 13 bar code: 8436041360032

Ref: 0203 - ROUND DUCTING REDUCER

Ø from 125 to 100 mm

Units per box: 50



EAN 13 bar code: 8436041360049

Ref: 0204 - RECTANGULAR CONNECTOR

□ 110 x 55 mm

Units per box: 50



EAN 13 bar code: 8436041360056

Ref: 0205 - FLAT CHANNEL CONNECTOR

Ø 100 mm x □ 110 x 55 mm

Units per box: 50



EAN 13 bar code: 8436041360063



Range 0200

Ref: 0206 - ROUND 90° ELBOW

Ø 100 mm

Units per box: 50



EAN 13 bar code: 8436041360070

Ref: 0207 - ROUND TO RECTANGULAR 90° ELBOW

Ø 100 mm x □ 110 x 55 mm

Units per box: 50



EAN 13 bar code: 8436041360087

Ref: 0208 - DUCTING BEND 90° VERTICAL

□ 110 x 55 mm

Units per box: 50



EAN 13 bar code: 8436041360094

Ref: 0209 - DUCTING BEND 90° HORIZONTAL

□ 110 x 55 mm

Units per box: 50



EAN 13 bar code: 8436041360100

Ref: 0210 - WALL OUTLET GRAVITY FLAPS - MIXED

Ø 100 mm and □ 110 x 55 mm

Units per box: 50



EAN 13 bar code: 8436041360117

Ref: 0211 - WALL OUTLET GRAVITY FLAPS - RECTANGULAR

□ 110 x 55 mm

Units per box: 50



EAN 13 bar code: 8436041360131

Plastic Piping and Accessories for Ventilation and Extraction



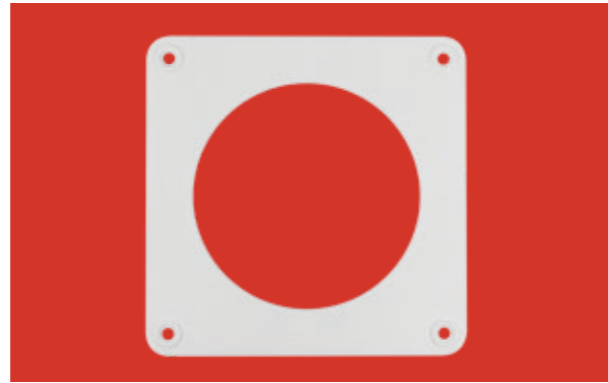
Range 0200

Ref: 0212 - ROUND TO RECTANGULAR ADAPTER
 Ø 100 mm □ 110 x 55 mm
 Units per box: 50



EAN 13 bar code: 8436041360155

Ref: 0213 - ROUND WALL PLATE
 Ø 100 mm
 Units per box: 50



EAN 13 bar code: 8436041360162

Ref: 0214 - RECTANGULAR WALL PLATE
 □ 110 x 55 mm
 Units per box: 50



EAN 13 bar code: 8436041360179

Ref: 0215 - ROUND CLIP
 Ø 100 mm
 Units per box: 50



EAN 13 bar code: 8436041360186

Ref: 0216 - RECTANGULAR FLAT CHANNEL CLIP
 □ 110 x 55 mm
 Units per box: 50



EAN 13 bar code: 8436041360193

Ref: 0217 - FLAT CHANNEL CLIP
 □ 55 x 110 mm
 Units per box: 50

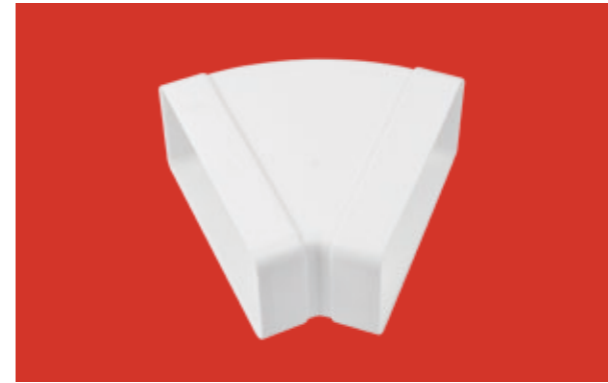


EAN 13 bar code: 8436041360209



Range 0200

Ref: 0218 - FLAT HORIZONTAL 45° ELBOW
 □ 110 x 55 mm
 Units per box: 50



EAN 13 bar code: 8436041360216

Ref: 0219 - HORIZONTAL T PIECE
 □ 110 x 55 mm
 Units per box: 50



EAN 13 bar code: 8436041360223

Ref: 0220 - ROUND TO RECTANGULAR VERTICAL T PIECE
 □ 110 x 55 mm x Ø 100 mm
 Units per box: 50



EAN 13 bar code: 8436041360230

Ref: 0221 - ROUND WALL CONNECTOR
 Ø 100 mm
 Units per box: 50



EAN 13 bar code: 8436041360247

Ref: 0222 - RECTANGULAR WALL CONNECTOR
 □ 110 x 55 mm
 Units per box: 50



EAN 13 bar code: 8436041360254

Ref: 0223 - ROUND 45° ELBOW
 Ø 100 mm
 Units per box: 50



EAN 13 bar code: 8436041360261

Plastic Piping and Accessories for Ventilation and Extraction



Range 0200

Ref: 0224 - ROUND DUCTING LOUVRED GRILLE
Ø 100 mm
Units per box: 50



EAN 13 bar code: 8436041363934

Ref: 0226 - RECTANGULAR DUCTING LOUVRED GRILLE
□ 110 x 55 mm
Units per box: 50



EAN 13 bar code: 8436041363941

Ref: 0250 - WALL OUTLET GRAVITY FLAPS - MIXED
Ø 100 mm and □ 110 x 55 mm BROWN
Units per box: 50



EAN 13 bar code: 8436041360124

Ref: 0251 - WALL OUTLET GRAVITY FLAPS -
RECTANGULAR Ø 110 x 55 mm BROWN
Units per box: 50



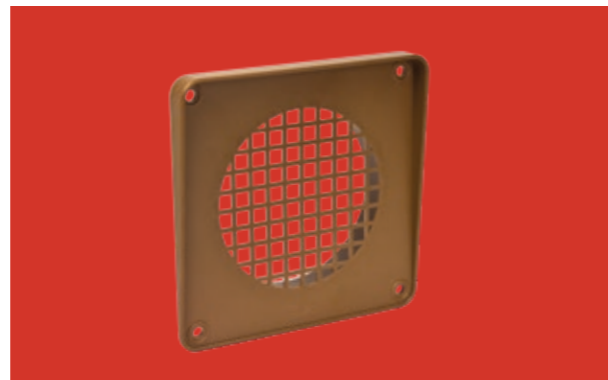
EAN 13 bar code: 8436041360148

Ref: 0252 - RECTANGULAR DUCTING LOUVRED GRILLE
□ 110 x 55 mm BROWN
Units per box: 50



EAN 13 bar code: 8436041363958

Ref: 0253 - ROUND DUCTING LOUVRED GRILLE
Ø 100 mm BROWN
Units per box: 50



EAN 13 bar code: 8436041363965



Range 0200

Ref: 0254 - CONNECTOR CONVERTER
Ø de 100 a 80 mm
Units per box: 50



EAN 13 bar code: 8436041365044

Ref: 0255 - ROUND T PIECE
Ø 100 mm
Units per box: 25



EAN 13 bar code: 8436041365068

Plastic Piping and Accessories for Ventilation and Extraction

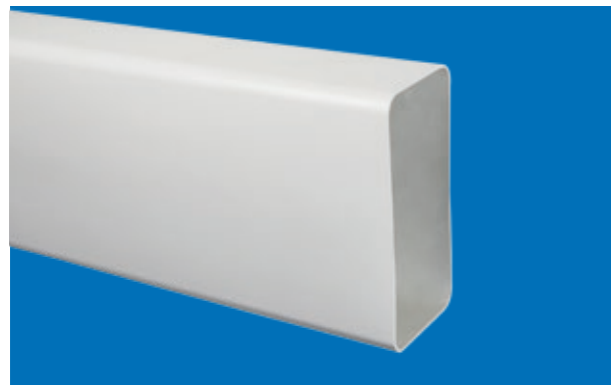


Range 0400

Ref: 0400 - FLAT CHANNEL

□ 147 x 70 x 1.500 mm

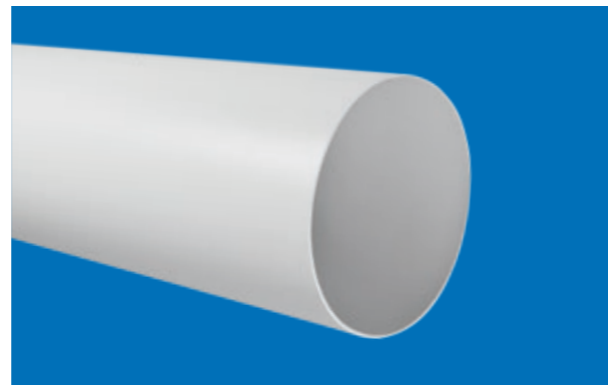
Units per box: 18 m. (12 pieces of 1,5 m)



Ref: 0401 - ROUND PIPE

∅ 120 x 1.500 mm

Units per box: 12 m. (8 pieces of 1,5 m)



Ref: 0402 - STRAIGHT ROUND PIPE CONNECTOR

∅ 120 mm

Units per box: 30



EAN 13 bar code: 8436041360292

Ref: 0403 - ROUND DUCTING REDUCER

∅ from 125 to 100 mm

Units per box: 30



EAN 13 bar code: 8436041360308

Ref: 0404 - RECTANGULAR CONNECTOR

□ 147 x 70 mm

Units per box: 30

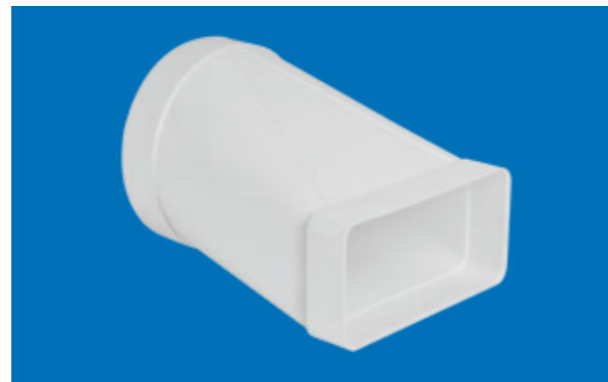


EAN 13 bar code: 8436041360315

Ref: 0405 - FLAT CHANNEL CONNECTOR

∅ 120 mm x □ 147 x 70 mm

Units per box: 30



EAN 13 bar code: 8436041360322



Range 0400

Ref: 0406 - ROUND 90° ELBOW

∅ 120 mm

Units per box: 30



EAN 13 bar code: 8436041360339

Ref: 0407 - ROUND TO RECTANGULAR 90° ELBOW

∅ 120 mm x □ 147 x 70 mm

Units per box: 30



EAN 13 bar code: 8436041360346

Ref: 0408 - DUCTING BEND 90° VERTICAL

□ 147 x 70 mm

Units per box: 30



EAN 13 bar code: 8436041360353

Ref: 0409 - DUCTING BEND 90° HORIZONTAL

□ 147 x 70 mm

Units per box: 30



EAN 13 bar code: 8436041360537

Ref: 0410 - WALL OUTLET GRAVITY FLAPS - ROUND

∅ 120 mm

Units per box: 30



EAN 13 bar code: 8436041360360

Ref: 0411 - WALL OUTLET GRAVITY FLAPS - RECTANGULAR

□ 147 x 70 mm

Units per box: 30



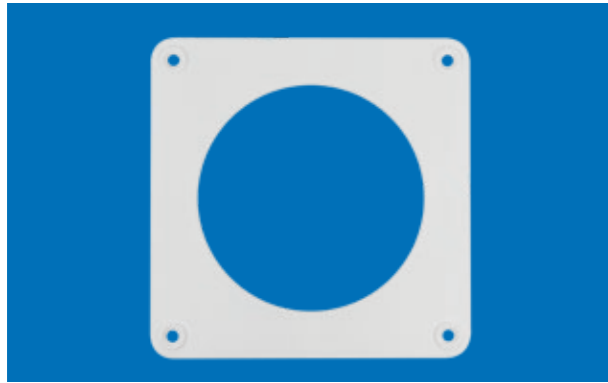
EAN 13 bar code: 8436041360384

Plastic Piping and Accessories for Ventilation and Extraction



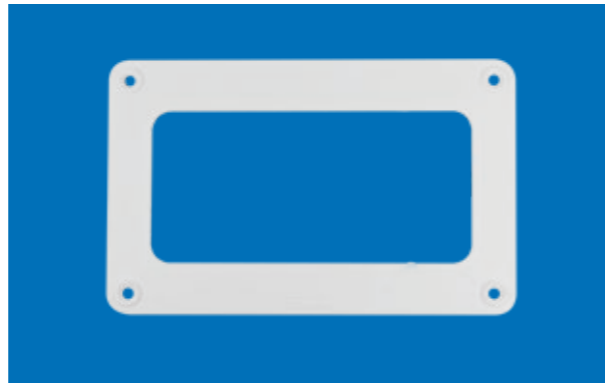
Range 0400

Ref: 0413 - ROUND WALL PLATE
Ø 120 mm
Units per box: 30



EAN 13 bar code: 8436041360407

Ref: 0414 - RECTANGULAR WALL PLATE
□ 147 x 70 mm
Units per box: 30



EAN 13 bar code: 8436041360414

Ref: 0415 - ROUND CLIP
Ø 120 mm
Units per box: 30



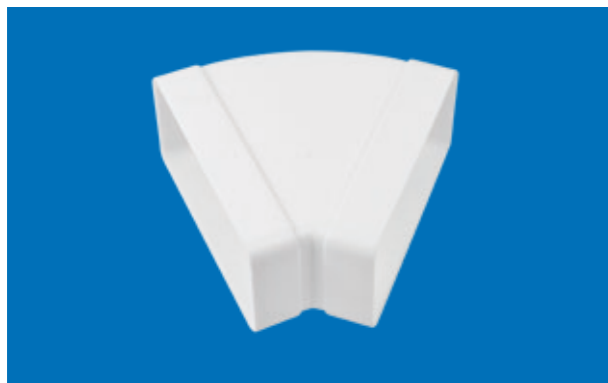
EAN 13 bar code: 8436041360421

Ref: 0416 - RECTANGULAR FLAT CHANNEL CLIP
□ 147 x 70 mm
Units per box: 30



EAN 13 bar code: 8436041360438

Ref: 0418 - FLAT HORIZONTAL 45° ELBOW
□ 147 x 70 mm
Units per box: 30



EAN 13 bar code: 8436041360445

Ref: 0419 - HORIZONTAL T PIECE
□ 147 x 70 mm
Units per box: 30

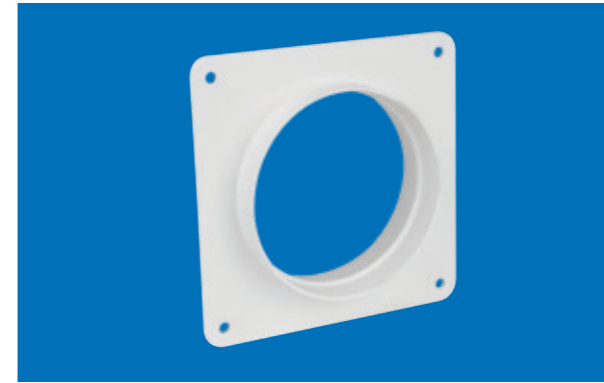


EAN 13 bar code: 8436041364337



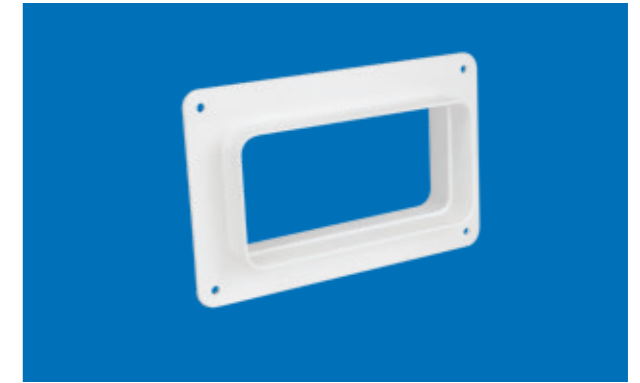
Range 0400

Ref: 0421 - ROUND WALL CONNECTOR
Ø 120 mm
Units per box: 30



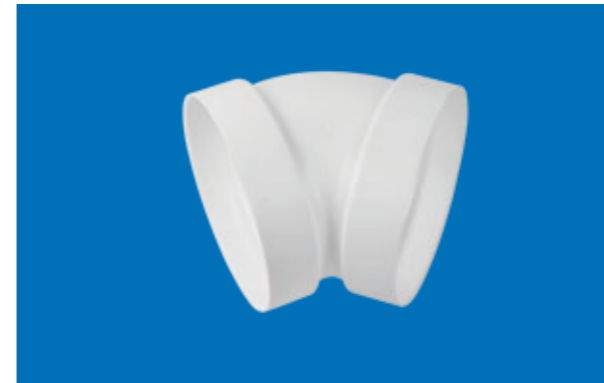
EAN 13 bar code: 8436041360452

Ref: 0422 - RECTANGULAR WALL CONNECTOR
□ 147 x 70 mm
Units per box: 30



EAN 13 bar code: 8436041360469

Ref: 0423 - ROUND 45° ELBOW
Ø 120 mm
Units per box: 30



EAN 13 bar code: 8436041360476

Ref: 0424 - ROUND DUCTING LOUVRED GRILLE
Ø 120 mm
Units per box: 30



EAN 13 bar code: 8436041360483

Ref: 0425 - ROUND PIPE CONNECTOR
Ø from 125 to 120 mm
Units per box: 30



EAN 13 bar code: 8436041360506

Ref: 0426 - RECTANGULAR DUCTING LOUVRED GRILLE
□ 147 x 70 mm
Units per box: 30



EAN 13 bar code: 8436041360513

Plastic Piping and Accessories for Ventilation and Extraction



Range 0400

Ref: 0450 - WALL OUTLET GRAVITY FLAPS - ROUND
Ø 120 mm BROWN
Units per box: 30



EAN 13 bar code: 8436041360377

Ref: 0451 - WALL OUTLET GRAVITY FLAPS - RECTANGULAR □ 147 x 70 mm BROWN
Units per box: 30



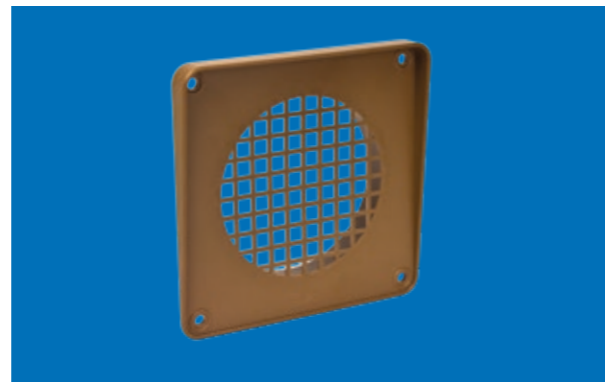
EAN 13 bar code: 8436041360391

Ref: 0452 - RECTANGULAR DUCTING LOUVRED GRILLE □ 147 x 70 mm BROWN
Units per box: 30



EAN 13 bar code: 8436041360520

Ref: 0453 - ROUND DUCTING LOUVRED GRILLE Ø 120 mm BROWN
Units per box: 30



EAN 13 bar code: 8436041360490

Ref: 0454 - ROUND PIPE CONNECTOR
Ø from 150 to 120 mm
Units per box: 30



EAN 13 bar code: 8436041363972

Ref: 0455 - ROUND T PIECE
Ø 120 mm
Units per box: 24

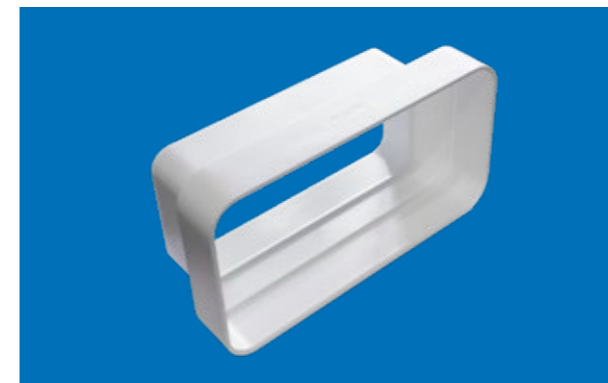


EAN 13 bar code: 8436041364511



Range 0400

Ref: 0430 - RECTANGULAR CONVERTER
□ 147 x 70 mm a 110 x 55mm
Units per box: 30



EAN 13 bar code: 8436041364948

FLEXIBLE DUCTING



Reference	Designation	Units per box
0102-3	Flexible ducting 102 mm (piece 3 m)	1 (3 m)
0102-6	Flexible ducting 102 mm (piece 6 m)	1 (6 m)
0127-6	Flexible ducting 127 mm (piece 6 m)	1 (6 m)
0150-6	Flexible ducting 152 mm (piece 6 m)	1 (6 m)

Flexible washing machine hose.
(Not suitable for extraction hoods or ventilation according to CTE).

SELF-REGULATING EXHAUST VALVE



Ref.	Designation
0466	Self-regulating exhaust valve 60 m ³ /h
0467	Self-regulating exhaust valve 75 m ³ /h
0468	Self-regulating exhaust valve 90 m ³ /h
0469	Self-regulating exhaust valve 120 m ³ /h
0470	Adaptor (valve - pipe)

Application	Units per box
Bathroom and kitchen up to 8 m ²	1
Kitchen from 8 to m ²	1
Kitchen from 11 to 17 m ²	1
Kitchen bigger than 17 m ²	1
Connection air grating to pipe	1

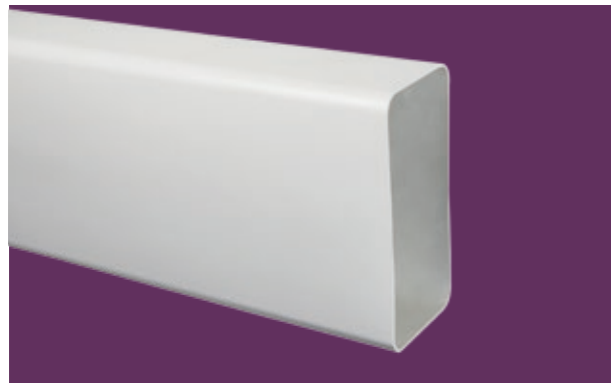
Self-regulated air grating that meets CTE's requirements.

Plastic Piping and Accessories for Ventilation and Extraction

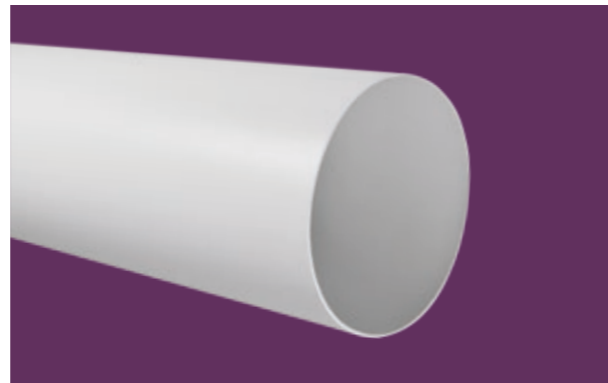


Range 0600

Ref: 0600 - FLAT CHANNEL
□ 170 x 90 x 1.500 mm
Units per box: 12 m. (8 tiras de 1,5 m)



Ref: 0601 - ROUND PIPE
Ø 150 x 1.500 mm
Units per box: 12 m. (8 tiras de 1,5 m)



Ref: 0602 - STRAIGHT ROUND PIPE CONNECTOR
Ø 150 mm
Units per box: 15



EAN 13 bar code: 8436041364801

Ref: 0604 - RECTANGULAR CONNECTOR
□ 170 x 90 mm
Units per box: 15



EAN 13 bar code: 8436041364825

Ref: 0605 - FLAT CHANNEL CONNECTOR
Ø 150 mm x □ 170 x 90 mm
Units per box: 15



EAN 13 bar code: 8436041364832

Ref: 0606 - ROUND 90° ELBOW
Ø 150 mm
Units per box: 15



EAN 13 bar code: 8436041364849



Range 0600

Ref: 0607 - ROUND TO RECTANGULAR 90° ELBOW
Ø 150 mm x □ 170 x 90 mm
Units per box: 15



EAN 13 bar code: 8436041364856

Ref: 0608 - DUCTING BEND 90° VERTICAL
□ 170 x 90 mm
Units per box: 15



EAN 13 bar code: 8436041364863

Ref: 0609 - DUCTING BEND 90° HORIZONTAL
□ 170 x 90 mm
Units per box: 15



EAN 13 bar code: 8436041364870

Ref: 0618 - FLAT HORIZONTAL 45° ELBOW
□ 170 x 90 mm
Units per box: 15



EAN 13 bar code: 8436041364894

Ref: 0610 - WALL OUTLET GRAVITY FLAPS
Ø 150 mm y □ 170 x 90 mm
Units per box: 15



EAN 13 bar code: 8436041364887

Ref: 0650 - WALL OUTLET GRAVITY FLAPS
Ø 150 mm y □ 170 x 90 mm BROWN
Units per box: 15



EAN 13 bar code: 8436041364818

Plastic Piping and Accessories for Ventilation and Extraction



Range 0600

Ref: 0454 - CONNECTOR CONVERTER
 Ø de 150 a 120 mm
 Units per box: 30



EAN 13 bar code: 8436041363972

Ref: 0425 - CONNECTOR CONVERTER
 Ø de 125 a 120 mm
 Units per box: 30



EAN 13 bar code: 8436041360506

Ref: 0403 - ROUND DUCTING REDUCER
 Ø de 125 - 120 - 115 - 100 mm
 Units per box: 30



EAN 13 bar code: 8436041360308

Ref: 0656 - ROUND T PIECE WOX
 Units per box: 1



EAN 13 bar code: 8436041364917

Ref: 0619 - HORIZONTAL T PIECE
 □ 170 x 90 mm
 Units per box: 15

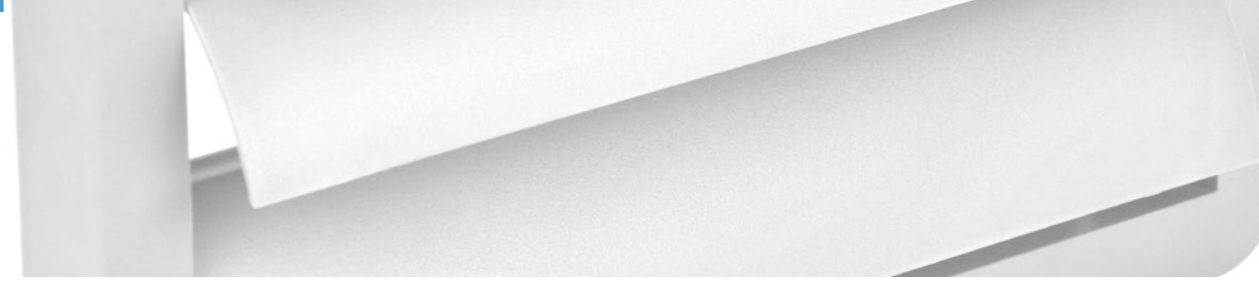


EAN 13 bar code: 8436041364924

Ref: 0630 - RECTANGULAR CONVERTER
 □ 170 x 90 mm a 147 x 70 mm
 Units per box: 15



EAN 13 bar code: 8436041364931



INSTALLATION



Click assembly. Easy assemble by professionals and particulars.

Cut the pipe perpendicularly with a hacksaw.



Clean any cutting waste.

Join the pipe inside with a union fitting until it stops.

The system is ready to use.



You can learn more about plastic pipes for ventilation and extraction launching this video on your mobile phone.



STANDARDS, RECOMMENDATIONS AND APPROVALS:



Certification of conduit technical specifications
 Standard CTE

- DB SI (Basic Document for Fire Security) requirements, passive security
- DB HS3 requirements, efficiency and energy saving/healthiness
- DB HR, noise protection

(This information represents Elinsa's knowledge and belief, based on information and requirement to suppliers and on quality assurance.)



General Terms and Conditions of sale

PRICES

The prices in the price list do not include taxes and are subject to change without previous notice.

ORDERS

Orders of all the items in this catalogue must be placed by complete boxes. We do not accept spare orders.

The orders can be delivered separately, which shall not cancel the total order.

All prices are quoted as net prices and include packaging but do not include value added tax, which is to be paid additionally by the Customer in the amount specified by applicable laws.

Any further conditions must be agreed between the parts but, in any case, the merchandise is always transported at recipient's risk.

INVOICING

Payment shall be agreed between parts previous classification by the Customer and within applicable laws and regulations.

The invoice of purchased materials will be generated according to applicable fees and regulations.

Sales made by Elinsa are under a insurance policy signed with Seguros y Reaseguros Crédito y Caución.

RETURNS

ELINSA will not admit any return or reclamation after 8 days of the reception, neither without prior acceptance or written confirmation. If there is an agreement and before the preceding limitation period, the material will be transported to our warehouse in its original package and prepaid.

The Customer must inspect the goods immediately after reception. Any damage during the routine inspection that can be attributed to transportation, must be detailed on the delivery note of the transportation agency, detailing the incidence (lost package, broken package, broken seal). A copy of the delivery note must be submitted to ELINSA within a maximum period of twenty four hours after reception.

Any reclamation submitted after the preceding limitation period will be declined.

WARRANTY

The guarantee is limited to the replacement of products that ELINSA finds to be defective at manufacture. The guarantee shall be of no effect if the material has been used in a wrong manner, improperly handled or gone to a wrong destination, according to its features.

MODIFICATIONS

ELINSA reserves the right to change the design, the packing units and the price of the products without previous notice.

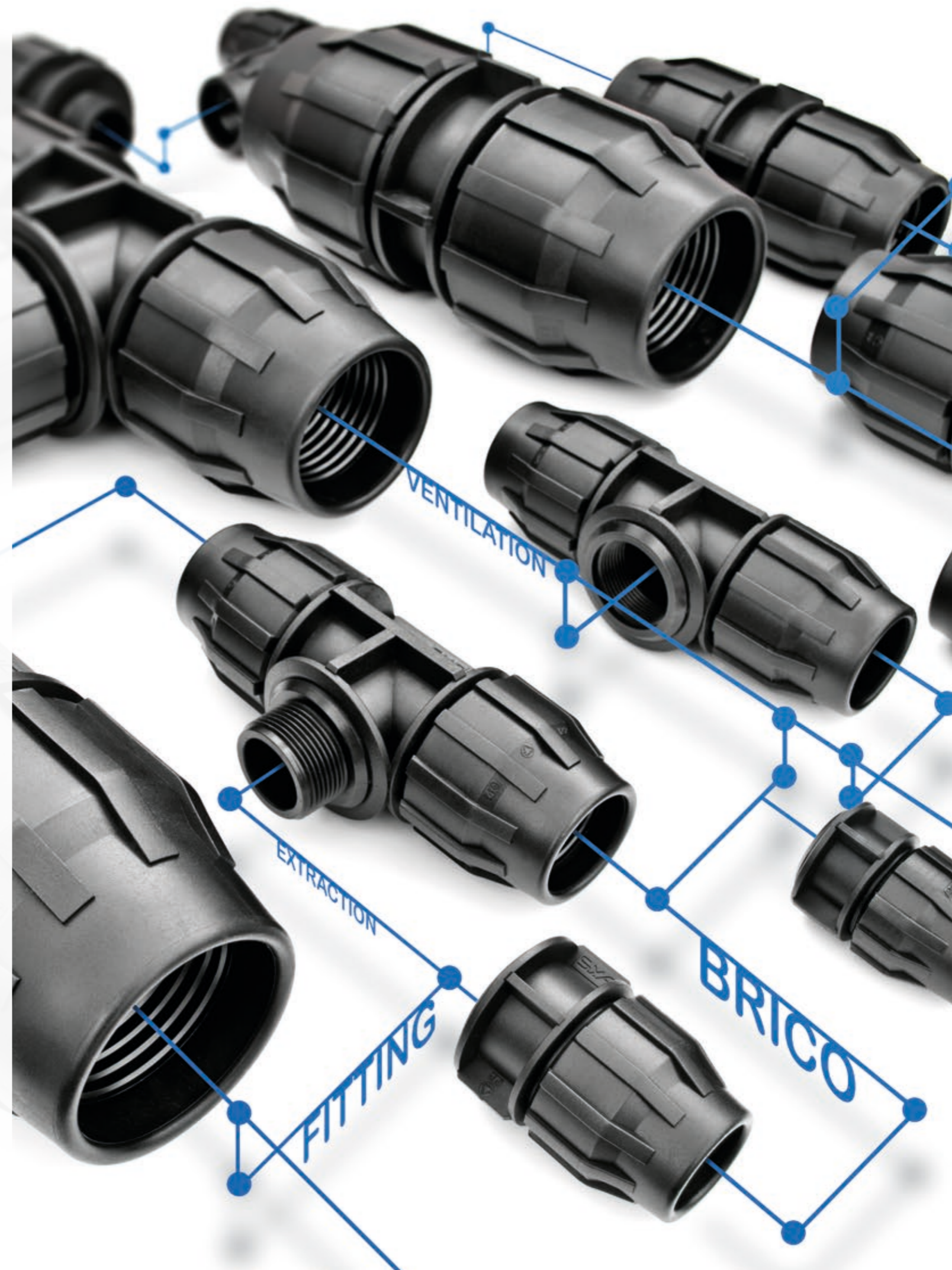
JURISDICTION

Any action or litigation that may arise is within the exclusive jurisdiction of the Courts and Tribunals of the city of Madrid.

LIMITATIONS

Total or partial reproduction of this catalogue without the express authorisation of ELINSA is prohibited.

All technical data and specifications in this catalogue has only informative character and non-contractual because they are subject to modifications in time. We decline any liability concerning any responsibility derived of the applications of this data and specifications.





Calle Ramón y Cajal, 7 - Polígono Industrial Nuestra Señora de Butarque - 28914 Leganés (Madrid)
Teléfono: (+34) 91 686 04 00 Fax: (+34) 91 688 31 09 Email: elinsa@elinsa.net
www.elinsa.net

